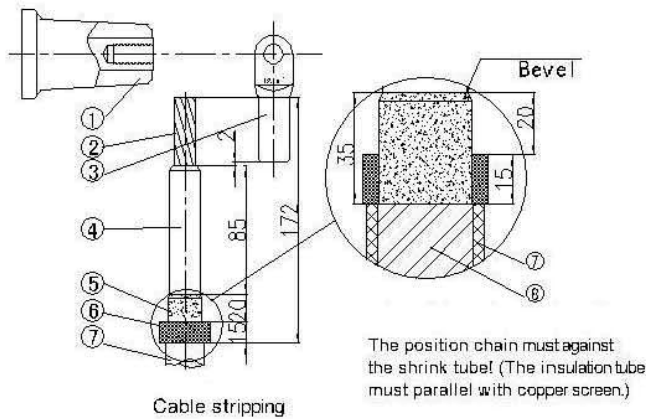


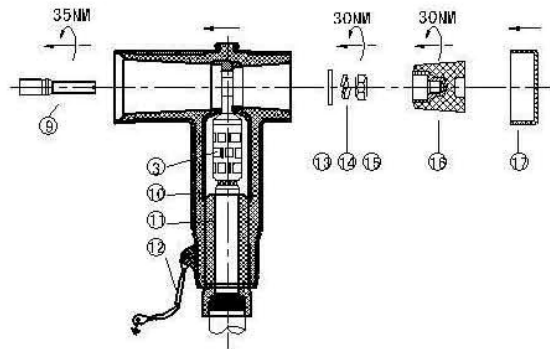
AQT3-12/24KD
 AHT3-12/24KD Apply to 12/24kV XLPE insulated cable Conductor cross section is 25-400mm²

配件名称 Components Description

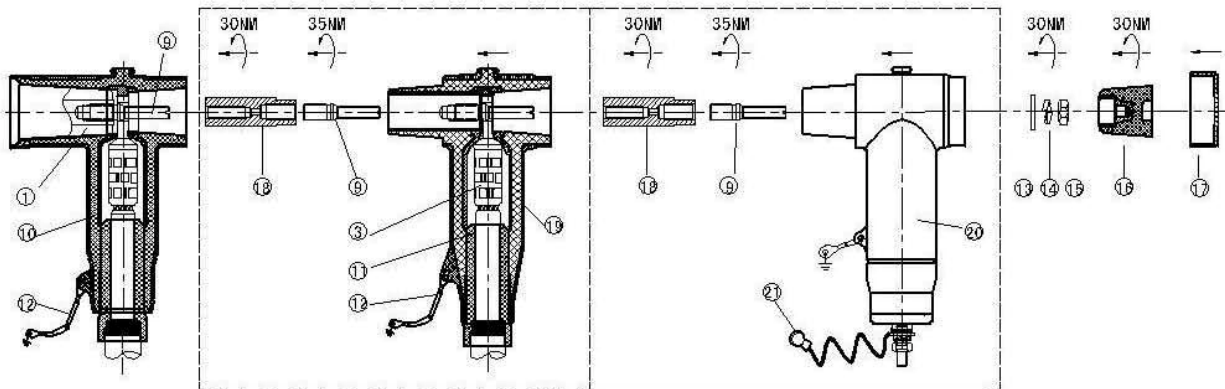
1	Bushing	8	Copper screen	15	Nut
2	Cable core	9	Bolt	16	Insulating plug
3	Lug	10	Front connector	17	Screen cover
4	Core insulation	11	Cable adaptor	18	Linking rod
5	Semi-conductive layer	12	Earthing wire	19	Rear connector
6	Positioning strips	13	Flat washer	20	Rear connector w/ arrester
7	Insulation tube	14	Spring washer	21	Tinned soft wire



Cable stripping



Front connector installation



Rear connector (with arrester) Installation

Attention: This products need to be installed by trained electrical engineer following the safe using guide of high-voltage equipment.

1. The length of phase shall not less than 650mm.
2. Do not cut core insulation, Make a bevel at semi-conductive layer and core insulation.
3. Cut the cold (heat) shrink tube circularly, make sure the trim cutting and accurate size.
4. The position chain is fixed on the semi-conductive layer against up port of shrink tube.
5. The direction of lug hole and bushing should be in the same line when compress the lug.
6. Must keep the contact parts clean before daub the lubricate evenly.